

Motorized Peeling Tool Series S

Application

The S-Series are motorized tools for removing the firmly bonded outer semi conductive shield from the main insulation of polymer insulated MV and HV power cables.

They are used by cable makers in the routine and type test field for preparing the cable ends to be inserted into the test terminations, such as water terminations.

In the field the tools help to save time when the cables are prepared for jointing or for being equipped with end terminations.

Standard knife, Model SK-S...

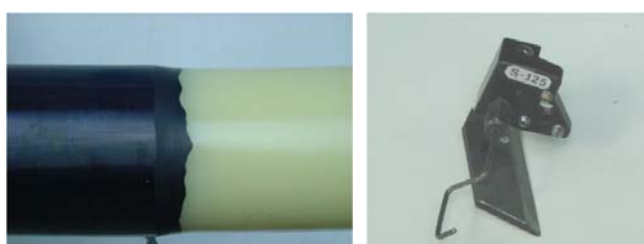
For water terminations the standard knife is used. This produces an edge between the insulation and the semicon. Which is fine in water terminations. The surface of the peeled insulation is very smooth. The standard knife is also used for making a stepped insulation, as needed in terminations. The insulation can be reduced in several steps.



Flat knife, Model FK-S...

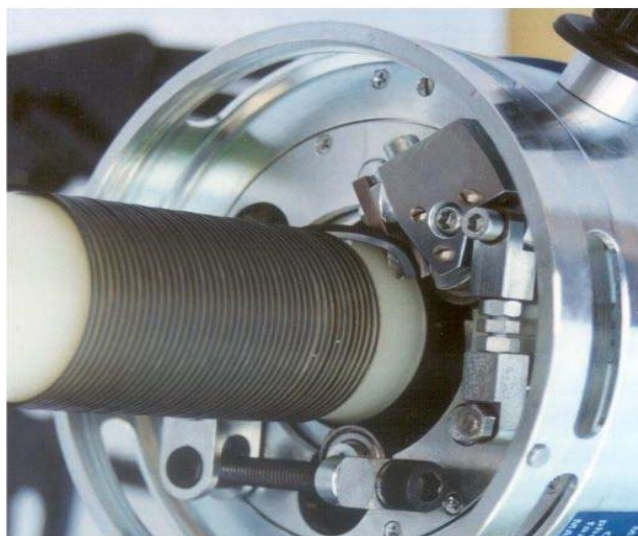
For mounting slip-on joints and terminations, the transition between insulation and semicon must be very smooth. This prevents enclosures of air, which would produce PD, leading to an eventual failure in the joint or cable.

The flat knife produces a transition and an insulation surface of such quality that manual rework is completely unnecessary or kept at a minimum.



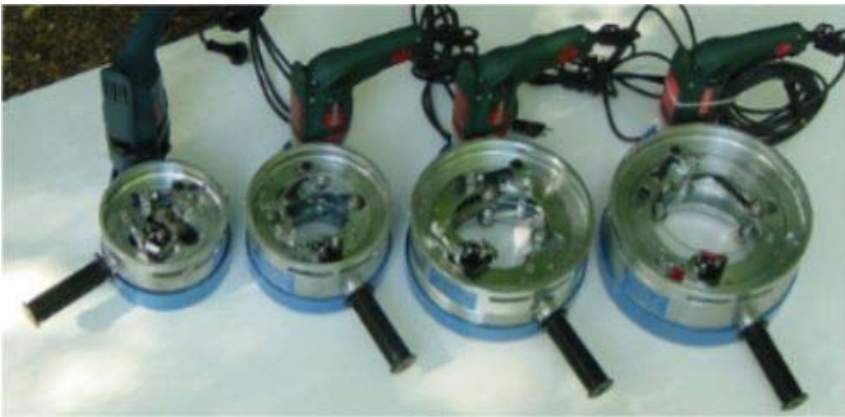
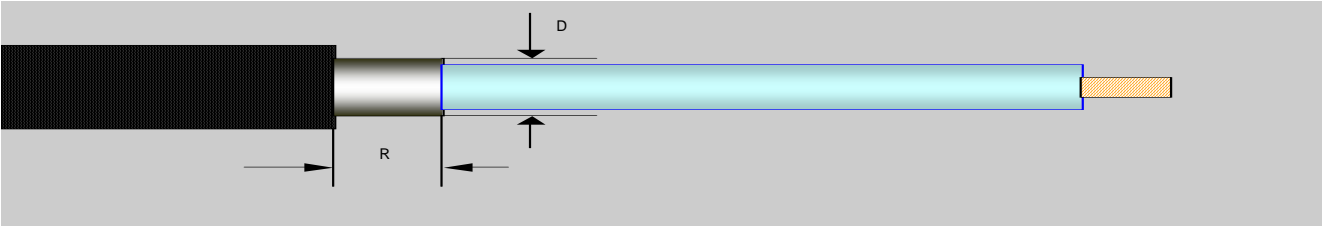
Main Benefits

- Very smooth insulation surface
- High peeling speed of up to 1m/minute
- Can also handle slightly bent cables
- Can handle cables which are not completely round
- Large range of diameters to which the tool can be adapted without steps, and without the need of adaptors
- Depending on the application different styles of knives can be mounted
- The tool can be adapted to the cable in seconds
- High quality cutting knives for peeling several hundreds of meters without sharpening
- Very reliable and robust design



Main Technical Data	S50	S80	S125	S150
Range of cable diameter D (mm)	15-50	40-80	70-125 *)	100-150
Weight of tool including motor (kg)	6	9	12	15
Peeling depth with Standard Knife (mm)	0-4	0-4	0-4	0-4
Peeling depth with Flat Knife (mm)	0 - 2	0 - 2	0 - 2	0-2
Minimum length of remaining semicon R (mm)	60	65	70	75
Electric motor	220 V; 50 or 60 Hz, alternatively 110 V; 50 or 60 Hz			

*) For peeling with the Flat Knife the maximum diameter is 110 mm



Tripod Model TP-S50 or TP-S80

HV cables are rather stiff. Therefore they can support the weight of the peeling tool easily. This is not the case for the thinner MV cables.

With the optional Tripod for the S50 or the S80 it is possible to peel the thinnest MV cable without having to support the tool by hand.

The tripod is equipped with swivel castors, allowing the tool to move along with the fix cable with the speed of the feed.

The working height can be adapted for convenient working.

The tripod is available for Models S50 and S80.

Scope of Supply

- 1 Base tool with motor
- 1 Base plate with standard knife, Model BSK-S...
- 1 Set of tools for adjusting
- 1 Instruction manual English
- 1 Spare standard knife, Model SK-XLPE-S..
- 1 Spare drive belt, Model DB-S...

Optional

- 1 Tripod with swivel castors, Model TP-S..
- 1 Base plate with flat knife, Model BFK-S...
- 1 Spare flat knife, Model FK-S....
- 1 Set of 3 spare standard knives, Model SK-XLPE-S...
- 1 Set of 3 spare drive belts, Model DB-S...

Hivotec Ltd.
Im Bödeli 5
CH- 4102 Binningen
Switzerland

Phone
Fax
E-mail
URL

+ 41 61 303 90 11
+ 41 61 302 21 91
Al.Jenni@hivotec.com
www.hivotec.com